

BOCA RATON HOTEL AND CLUB, GOLF COURSE/OPEN SPACE REPLAT

A PORTION OF PARCEL "A" (GOLF COURSE/OPEN SPACE), BOCA RATON HOTEL AND CLUB, P.U.D., AS RECORDED IN
 PLAT BOOK 53, PAGES 129 THROUGH 132, OF THE PUBLIC RECORDS OF PALM BEACH COUNTY, FLORIDA
 LYING IN SECTION 29, TOWNSHIP 47 SOUTH, RANGE 43 EAST,
 CITY OF BOCA RATON, PALM BEACH COUNTY, FLORIDA.

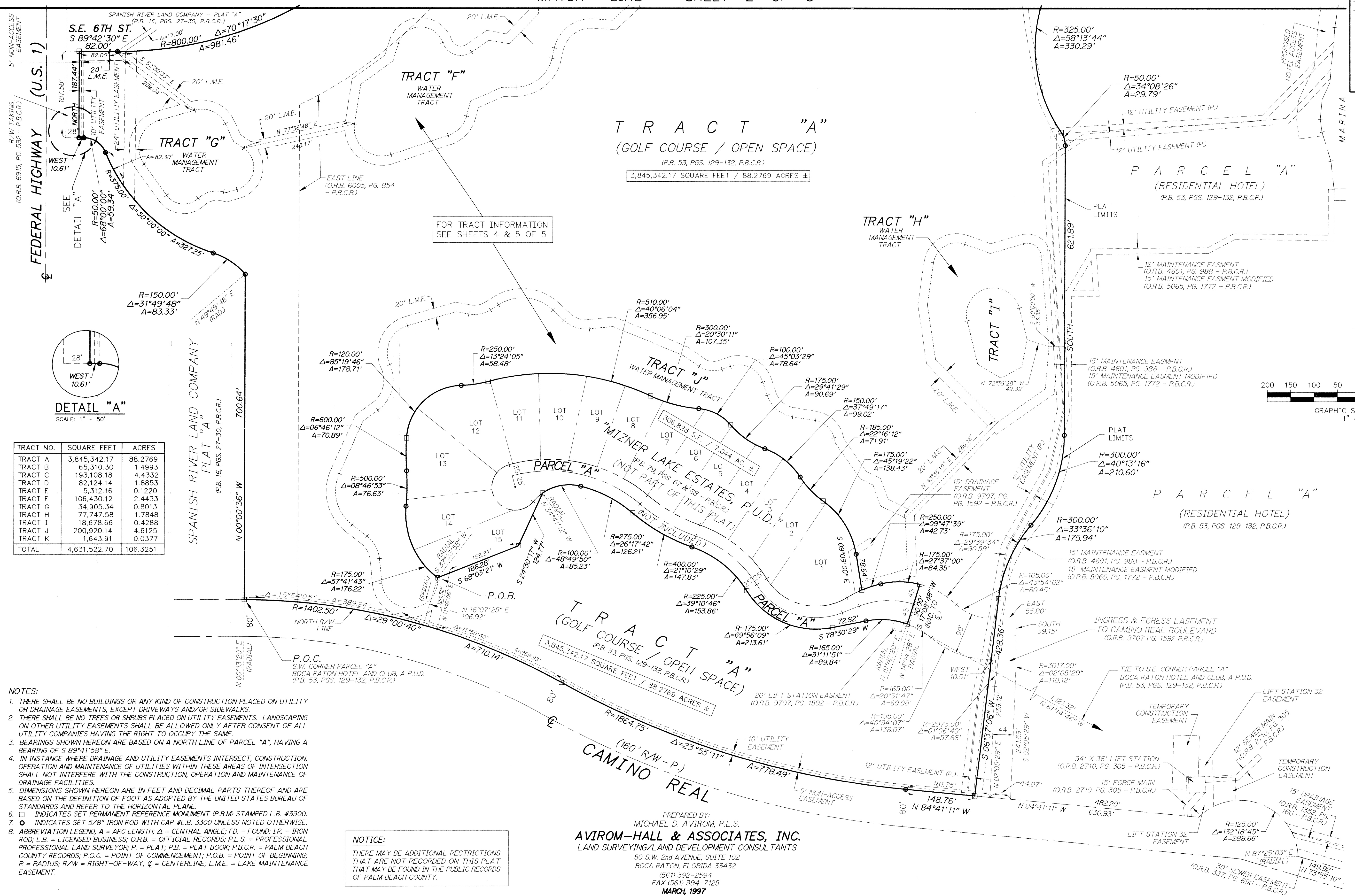
182

STATE OF FLORIDA
 COUNTY OF PALM BEACH
 This plat was filed for record
 at _____ this _____
 day of _____, 1997,
 and duly recorded in Plat Book
 _____, Pages _____ through _____

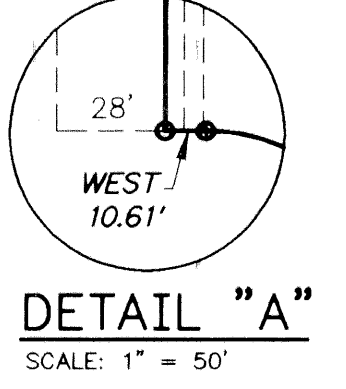
DOROTHY H. WILKEN
 Clerk of Circuit Court
 By: _____

SHEET 3 OF 5

MATCH LINE SHEET 2 OF 5



TRACT NO.	SQUARE FEET	ACRES
TRACT A	3,845,342.17	88.2769
TRACT B	65,310.30	1.4993
TRACT C	193,108.18	4.4332
TRACT D	82,124.14	1.8853
TRACT E	5,312.16	0.1220
TRACT F	106,430.12	2.4433
TRACT G	34,905.34	0.8013
TRACT H	77,747.58	1.7848
TRACT I	18,678.66	0.4288
TRACT J	200,920.14	4.6125
TRACT K	1,643.91	0.0377
TOTAL	4,631,522.70	106.3251



- NOTES:**
- THERE SHALL BE NO BUILDINGS OR ANY KIND OF CONSTRUCTION PLACED ON UTILITY OR DRAINAGE EASEMENTS, EXCEPT DRIVEWAYS AND/OR SIDEWALKS.
 - THERE SHALL BE NO TREES OR SHRUBS PLACED ON UTILITY EASEMENTS. LANDSCAPING ON OTHER UTILITY EASEMENTS SHALL BE ALLOWED ONLY AFTER CONSENT OF ALL UTILITY COMPANIES HAVING THE RIGHT TO OCCUPY THE SAME.
 - BEARINGS SHOWN HEREON ARE BASED ON A NORTH LINE OF PARCEL "A", HAVING A BEARING OF S 89°41'58" E.
 - IN INSTANCE WHERE DRAINAGE AND UTILITY EASEMENTS INTERSECT, CONSTRUCTION, OPERATION AND MAINTENANCE OF UTILITIES WITHIN THESE AREAS OF INTERSECTION SHALL NOT INTERFERE WITH THE CONSTRUCTION, OPERATION AND MAINTENANCE OF DRAINAGE FACILITIES.
 - DIMENSIONS SHOWN HEREON ARE IN FEET AND DECIMAL PARTS THEREOF AND ARE BASED ON THE DEFINITION OF FOOT AS ADOPTED BY THE UNITED STATES BUREAU OF STANDARDS AND REFER TO THE HORIZONTAL PLANE.
 - INDICATES SET PERMANENT REFERENCE MONUMENT (P.R.M.) STAMPED L.B. #3300.
 - INDICATES SET 5/8" IRON ROD WITH CAP #L.B. 3300 UNLESS NOTED OTHERWISE.
 - ABBREVIATION LEGEND: A = ARC LENGTH; Δ = CENTRAL ANGLE; FD = FOUND; IR = IRON ROD; L.B. = LICENSED BUSINESS; O.R.B. = OFFICIAL RECORDS; P.L.S. = PROFESSIONAL LAND SURVEYOR; P. = PLAT; P.B. = PLAT BOOK; P.B.C.R. = PALM BEACH COUNTY RECORDS; P.O.C. = POINT OF COMMENCEMENT; P.O.B. = POINT OF BEGINNING; R = RADIUS; R/W = RIGHT-OF-WAY; CL = CENTERLINE; L.M.E. = LAKE MAINTENANCE EASEMENT.

NOTICE:
 THERE MAY BE ADDITIONAL RESTRICTIONS THAT ARE NOT RECORDED ON THIS PLAT THAT MAY BE FOUND IN THE PUBLIC RECORDS OF PALM BEACH COUNTY.

PREPARED BY:
 MICHAEL D. AVIROM, P.L.S.
AVIROM-HALL & ASSOCIATES, INC.
 LAND SURVEYING/LAND DEVELOPMENT CONSULTANTS
 50 S.W. 2nd AVENUE, SUITE 102
 BOCA RATON, FLORIDA 33432
 (561) 392-2594
 FAX (561) 394-7125
 MARCH, 1997

BOOK 79 PAGE 182
 FLOOD ZONE - FLOOD MAP #
 QUAD #
 ZONING
 ZIP CODE
 PUD NAME City of Boca Raton